

STURGES
LONDON

Paddington Basin, London
£3,120 Per calendar month



- Interior designed luxury apartment situated on the fifth floor
- CCTV, Digital TV, Video Entry
- Prestigious building featuring Concierge, Porter, Lifts, Shops
- Secure underground parking
- Modern fitted open plan kitchen
- Ample storage space
- Excellent transport links including Paddington train station, the Heathrow Express & Elizabeth line



STURGES
LONDON



, London

A beautiful interior designed 1 bedroom, 1 bathroom luxury apartment. Situated on the fifth floor of this prestigious building which features concierge service, lift service and secure underground parking.

This stunning apartment comprises a beautiful reception room, a modern fitted open plan kitchen, 1 double bedroom, 1 bathroom and ample storage space.

Close by are excellent transport links such as Paddington Train Station (Elizabeth, Bakerloo, Hammersmith & City, Circle, District lines and Heathrow Express) and Edgware Road (Circle, District and Bakerloo lines).

Available furnished or unfurnished

Local Authority:

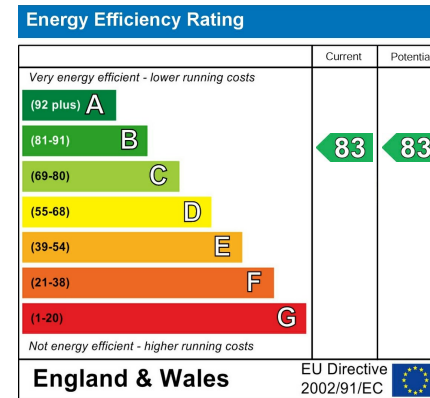
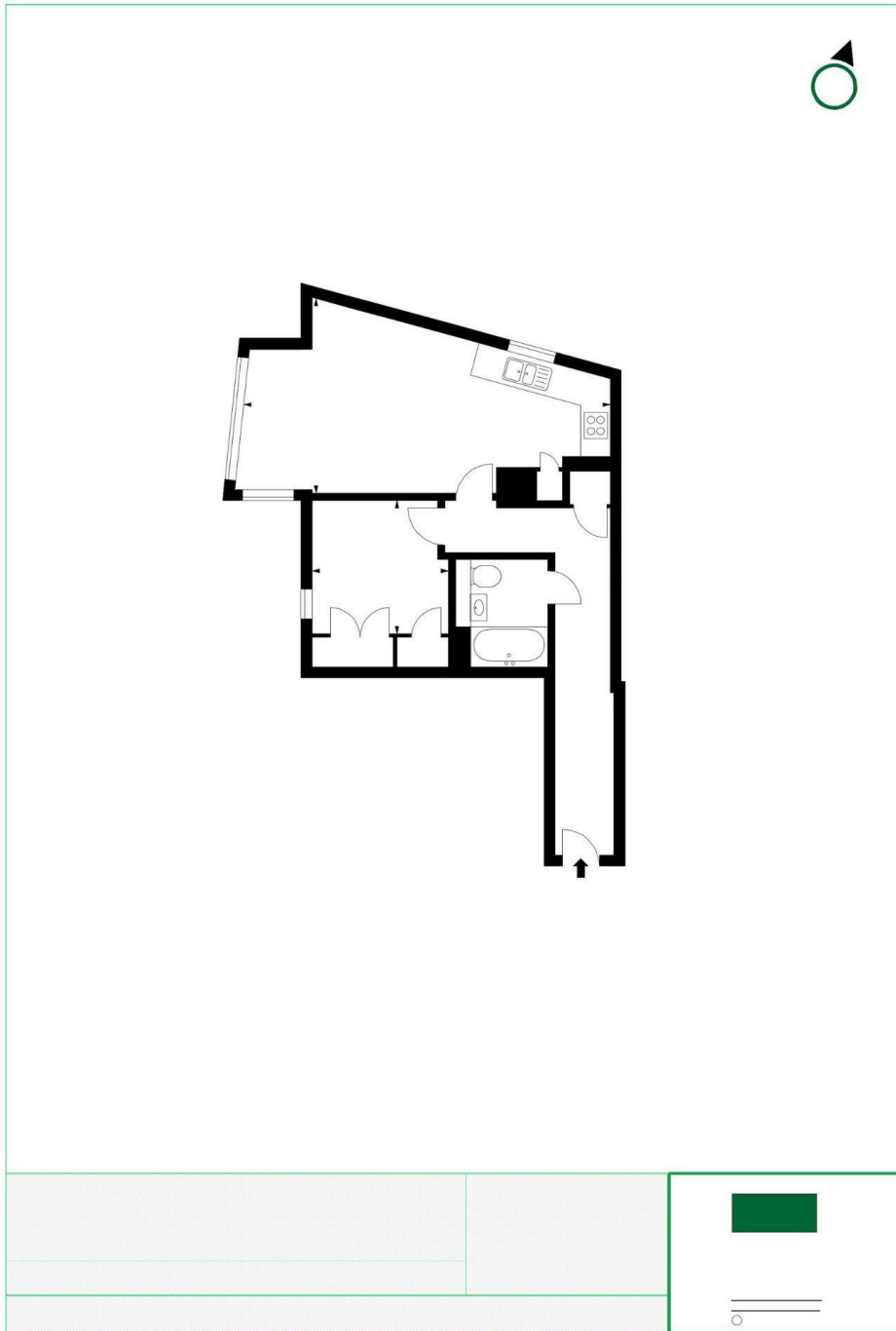
Council Tax Band: D

Lease: Add text here

Service Charges: Add text here

Ground Rent: Add text here

STURGES
LONDON



For more information, please contact:

(Tel) 020 3393 2002
(Email) hello@sturgeslondon.co.uk

668 Fulham Road, Parsons Green, London, SW6 5RX

sturgeslondon.co.uk

Agents Note: Whilst every care has been taken to prepare these particulars, they are for guidance purposes only. All measurements are approximate and for general guidance purposes only and whilst every care has been taken to ensure accuracy, they should not be relied upon and potential buyers/tenants are advised to recheck the measurements.